

Detail X

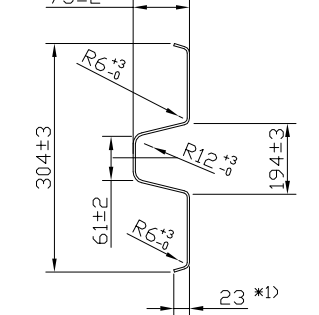
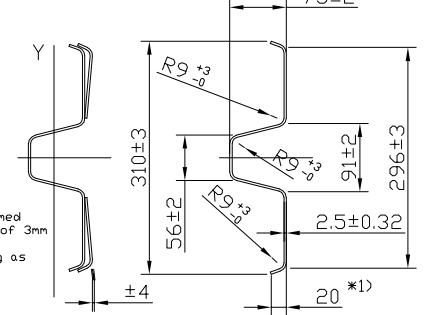
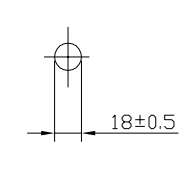
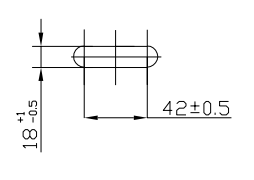
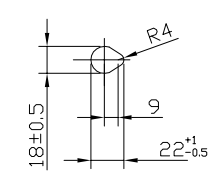
Detail Y

Detail Z

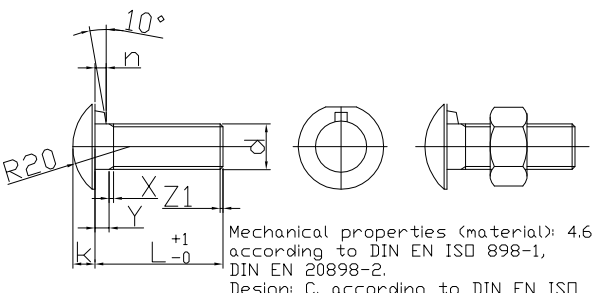
Deflection Y-axis ±5

A-A

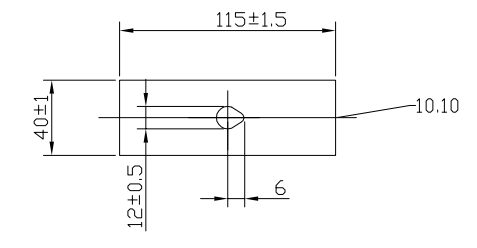
B-B



\*1) In these measurements the bandwidth tolerance is recorded. Tolerances of the non-deformed bands according to DIN EN 10051 refer to a nominal width of 435mm<sup>+0.2</sup> and a nominal thickness of 3mm ± 0.17.  
 \*2) Perforation is not absolutely necessary. Tubes with or without additional holes are drilling as equivalent in principle view.



Mechanical properties (material): 4.6 according to DIN EN ISO 898-1, DIN EN 20898-2. Design: C. according to DIN EN ISO 4759-1



Deck plate thickness 5mm ± 0.5mm

Item no.	Quantity	Description	Dimension	Single-weight	Overall weight	Material / Quality	Norm	Drawing
91.02	12	Guard rail beam Profil B	Bl. 435x2.5x4300	35.90	430.8	S355JR	EN 10025 / EN 1461	
91.07	36	Post C100/60 with footplate		10.07	362.5	S355JR	EN 10025 / EN 1461	
10.10	36	Butt plate M10	Fl. 40x5x115	0.20	7.2	S235JR	EN 10025 / EN 1461	K1.2-101
40.00	72	HRK-bolt with nib, with nut	M16x27	0.10	7.2	4.6	ISD 4032-5	B1.2-101
40.30	72	Flat washer	U 18	0.01	0.72	4.6	ISD 7091	
40.54	36	Hexagon bolt m. Nose with nut	M10x45	0.05	4.32	8.8	ISD 4032-8	
40.60	36	Flat washer	U 11	-	-	-		
41.02	144	Toge TSM-BS 14 x 220		0.21	30.2	-		

Weight of the construction: 835.2 kg

Weight/Running meter: 17.4 kg

Test length 48m \pt1.5;

		<b>metalwood.it</b>	
Surface	WRSS corten	General tolerance	Material S355 J2W
Remarks		Created by T. Baracz	Part number
		Title, Additional title	Document
		L1 H1-A-W4 (BW-ES 1.33)	Scale 1:20(1:10) (1:5)
			She. 00
			Date of issue 15.06.2016
			Form. A3

Part No.	d	L	Y	D	D1	k	i	n	g
40.00	M16	27	5	30	29	8	4	4	4.2
40.54	M10	45	5						