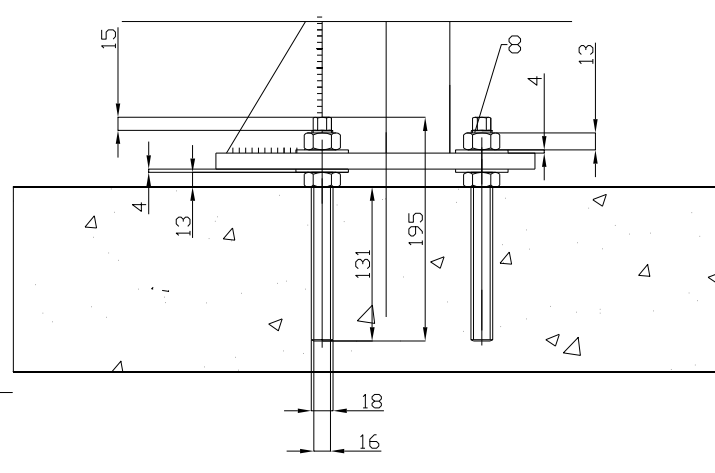
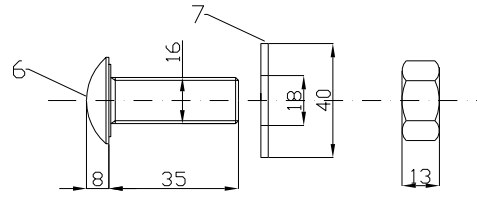
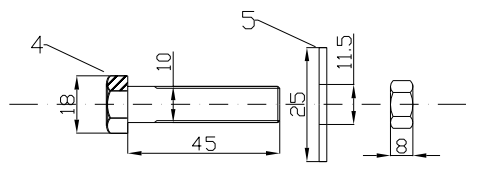
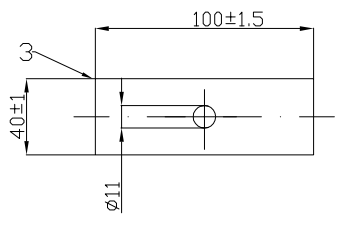
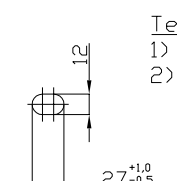
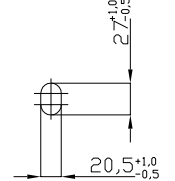
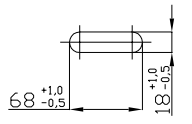


Detail A

Detail B

Detail C

Technical requirements:  
 1) Nominal thickness of steel  $\delta = 2.5 \pm 0.17$   
 2) Coating - hot dip zinc galvanizing, according to EN 1461:2009



Part Nr.	Quantity	Description	Dimension	Single weight	Overall weight	Material / Quality	Norm	Drawing
1	15	Beam type A with three waves	L:4310, $\delta=2.5$	62.59	938.88	S355JR	EN 10025-2/EN 1461	2.1
2	30	Post, $\delta=2.5$ with plate 300x300x15	C120x60x20x778	18.03	540.90	S355JR/S235JR	EN 10025-2/EN 1461	3.1
3	60	Fish plate with hole $\phi 11$	100x40x5	0.16	9.42	S235JR	EN 10025-2/EN 1461	5.1
4	60	Hexagon bolt M10x45 with nut	M10x45	0.05	3.00	6.8	EN ISO 898-1, ISO 4032	5.2
5	60	Washer $\phi 25$	$\phi 25 \times 1.5 \times 4$	0.013	0.78	S235JR	ISO 7091	5.2
6	180	HRK bolt M16x35 with nut	M16x35	0.10	18.00	-	ROUND HEAD OVAL, NECK BOLT	5.2
7	180	Washer $\phi 40$	$\phi 40 \times 18 \times 4$	0.048	8.64	S235JR	ISO 7091	5.3
8	8	Chemical anchor with 2 nuts and 2 washers	-	-	-	-	-	-

Weight of the construction: 1519.62 kg

Weight/Running meter: 25.33 kg

Test length 60 m \pt1.5;

F:\Rysunki NIEMCY wszystko - stara wersja\Moje systemy\2016\logo_alone2.jpg		metalwood.it			
Surface	WRSS corten	General tolerance		Material S355 J2W	
Remarks	Created by T. Baracz	Part number			
	Title, Additional title	Document			
L2 H2-A-W4 (BW-ES 2.00) 3n		Scale 1:20(1:10) (1:5)	She. 00	Date of issue 05.05.2016	Form. A3